

Purpose Statement

Open Awards Level 3 Diploma in Adult Care (RQF)

The Open Awards Level 3 Diploma in Adult Care is a regulated occupational qualification for the adult social care workforce in England.

Its purpose is to support you to develop and demonstrate the knowledge, skills and behaviours required for competent Level 3 practice in adult care, in line with current sector expectations and the responsibilities of adult care roles.

The qualification is designed to confirm occupational competence in real working environments.

Who is it for?

You must be working in adult social care in England and who have responsibility for providing person-centred, values-driven care and support. You will typically work under the direction of a manager or supervisor but will also have a degree of autonomy within the role.

It is suitable for you if you are developing within adult care practice, including working towards promoting and modelling good practice in the workplace.

You may or may not have supervisory responsibility, but you must be in a suitable role that allows you to develop and evidence competence in practice.

You must be aged 16 or over.

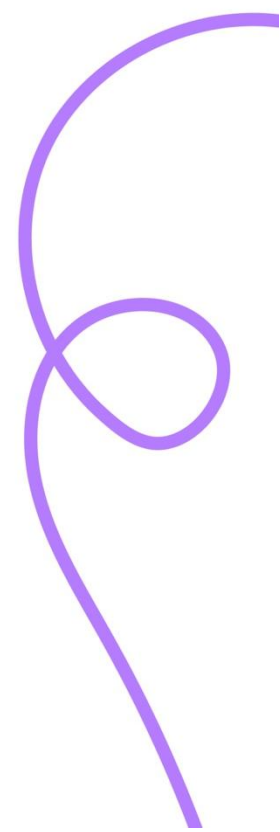
What does this qualification cover?

The qualification covers the knowledge, understanding and occupational competence required for effective practice in adult social care.

Core content includes areas such as ways of working in adult care, safeguarding, mental capacity and restrictive practice, duty of care, communication, handling information, person-centred practice, choice and independence, health and wellbeing, equality, diversity, inclusion, health and safety, continuous development and personal wellbeing.

Optional content allows the qualification to reflect different service contexts and role requirements.

This enables you to develop competence in areas that are relevant to your work, while ensuring that you achieve the essential core expected of a Level 3 adult care qualification.



What are the entry requirements?

You must be aged 16 or above to undertake this qualification.

There are no specific prior qualification requirements, but you must be employed, either full-time or part-time, in a suitable adult social care setting so that you can meet the practice and assessment requirements of the qualification.

You should be working under the direction of a manager or supervisor, be given tasks within your area of competence, and have access to appropriate supervision and support. Employer-specific induction and mandatory training are expected to be completed before you start the qualification, although the employer may decide whether these can be undertaken alongside it where appropriate.

What are the assessment methods?

You will need to build a portfolio of evidence over time to evidence your skills and knowledge.

Assessment methods may include observation of practice, questioning, written assessment activities, professional discussion, reflective accounts, personal statements, project work, witness testimony and other appropriate forms of evidence.

What are the progression opportunities?

This qualification supports progression within employment in adult social care by enabling you to develop and demonstrate competent Level 3 practice. It may support progression into roles with broader responsibilities, increased autonomy and greater accountability in frontline adult care.

It also provides a basis for further learning and professional development.

You may progress to higher-level qualifications, specialist adult care study, leadership and management development, or other workforce development routes relevant to the adult social care sector.

Who supports this qualification?

This qualification is approved by Skills for Care and has been designed in response to the updated content and assessment principles developed for the adult care sector in England. It reflects the expectations of employers, learners and providers and is intended to provide a credible and meaningful qualification for occupational practice.

