

Purpose Statement

Open Awards Level 3 Technical Occupational Entry in Youth Support Work (Diploma)

The primary purpose of this qualification is to enable you to demonstrate your competency as a Youth Support Worker. It prepares you to take your skills to a higher level and enhance your professional development. The qualification focuses on the essential skills required to fulfil a role supporting young people aged 11-25 (predominantly in the age range of 11-19) to promote their personal, social and educational development.

This occupation is found in informal settings such as youth clubs, activity-based projects and social action projects; or more formal settings such as schools, Early Help or youth offending and in local authority, charity, private or voluntary organisations.

This qualification has been approved by Skills England as a Technical Occupational Entry qualification that aligns to the knowledge, skills, and behaviours of the relevant employer-led occupational standard (ST0906).

Who is it for?

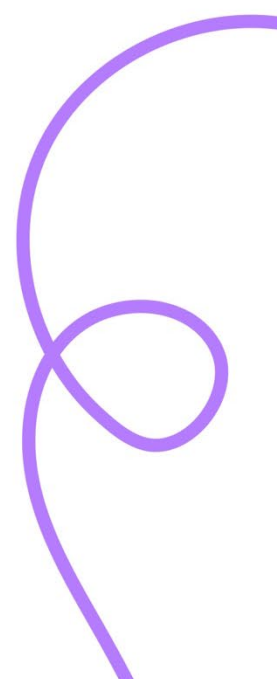
This qualification prepares you to become a Youth Support Worker, enabling you to work with young people aged 11-25 to promote their personal, social and educational development.

What does this qualification cover?

The qualification will take 390 hours to complete. 292 hours will be guided by your tutor/assessor. You will need to complete and achieve a pass mark in all of the 9 mandatory units.

The units content covers essential areas such as:

- Anti-Discriminatory Practice in a Youth Work Setting
- Engaging and Communicating with Young People
- Principles of Youth Work
- Safeguarding in a Youth Work Setting
- Work-based Practice in Youth Work



What are the entry requirements?

This qualification is available to learners aged 16 years or over.

Learners must be employed or be in a training role in the Youth Work sector to ensure they have the opportunity to develop competencies and complete tasks as outlined in the units within this qualification. This should include access to suitable supervision, role models/ youth work professionals.

Due to the level of this qualification, it is desirable that learners have English and Maths Skills to at least GCSE Level, or Level 2 equivalent, or have sufficient in role experience of using the required English and Maths skills.

What are the assessment methods?

You will be required to complete a portfolio of evidence internally set, internally marked and internally quality assured by the Training Provider and externally quality assured by Open Awards.

Types of evidence could include:

- Written assignments
- Observation of performance
- Questioning (written or oral)
- Practical Activities
- Reflective logs
- Project work
- Witness testimonies

There will be at least two observations of practice completed by a qualified assessor across the 12 month course duration.

What are the progression opportunities?

The qualification provides a mechanism for you to recognise and develop your competence as a Youth Support Worker.

Further progression opportunities could be to apprenticeships in:

- Early intervention practitioner (Level 4)
- Children, young people and families practitioner (Level 4)
- Youth Worker (Level 6)

Who supports this qualification?

This qualification was developed to meet Skills England criteria for technical occupational qualifications and the occupational standard (ST0906). This qualification has been designed collectively with a group of awarding bodies, facilitated by the National Youth Agency. It is supported by a range of education providers, including: The City of Liverpool College and Young Gloucestershire.

