

Purpose Statement

Open Awards Level 3 Diploma in the Principles and Practices for Pharmacy Technicians (Wales)

The primary purpose of this qualification is to prepare you for the occupational role of Pharmacy Technician. It has been designed to meet the registration requirements of the General Pharmaceutical Council (GPhC) and the relevant National Occupational Standards (NOS). This qualification has been designed to confirm occupational competence for Pharmacy Technicians working in a range of pharmacy settings, including: registered pharmacies; GP practices; care homes; CCGs and hospitals.

Who is it for?

Learners who are in a suitable pre-registration pharmacy technician role who want to progress within their role and develop the skills/knowledge/behaviours required to register with GPhC as a qualification pharmacy technician.

Learners on a Level 3 Pharmacy Technician integrated apprenticeship.

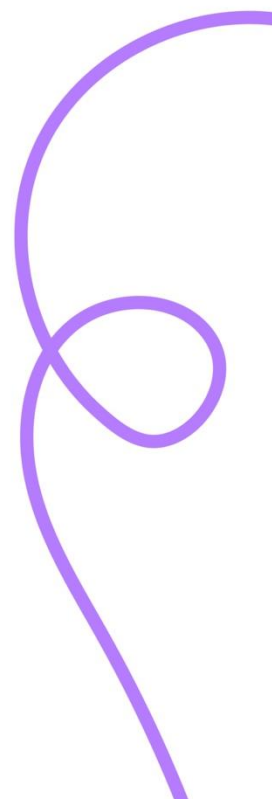
What does this qualification cover?

This qualification covers the knowledge, skills and behaviour within the GPhC Education and Training Standards for pharmacy technicians. There are 21 mandatory units that cover the underpinning knowledge and behaviours required to undertake a pharmacy technician role effectively including:

- Actions and uses of medicine
- Biological and chemical principles for pharmacy technicians
- Personal development for pharmacy technicians
- Principles for the management of pharmaceutical stock
- Principles of health and safety for pharmacy technicians
- Principles of health promotion and wellbeing in pharmacy services
- Principles of person-centred approaches for pharmacy technicians

Who supports this qualification?

This qualification was developed in collaboration with subject experts and employers, alongside other awarding bodies. It was supported by Skills for Health and Health Education England. This qualification has been approved by the General Pharmaceutical Council.



What are the entry requirements?

This qualification is suitable for learners aged 16+. Due to the level and content of the qualification, you are required to have GCSE English at Grade C (or equivalent) and GCSE Maths at Grade C (or equivalent) as a minimum.

It would also be recommended that you have a Level 2 Science qualification (e.g. GCSE Science at Grade C); or a Level 2 vocational qualification at level 2 or above (preferably related to pharmacy).

Additional mandatory entry requirements include:

- Good character checks e.g. Disclosure and Barring Service
- Health checks to seek information about conditions that may affect an applicant's fitness to practise as a trainee and how any such conditions will be managed.

You must be employed (either full-time or part-time) in a suitable pharmacy setting to ensure you have the opportunity to develop competencies and complete tasks as outlined in the units within this qualification.

What are the assessment methods?

You will be required to complete a portfolio of evidence set and marked by the education provider and externally quality assured by Open Awards.

You must provide sufficient evidence that you have the required knowledge, skills and understanding of the assessment criteria and that it is your own work.

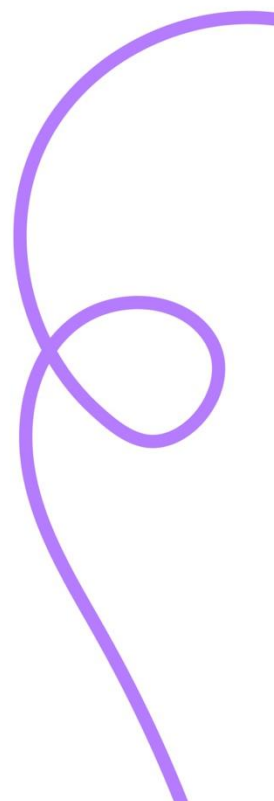
Types of evidence could include:

- a) Written assignments or examinations
- b) Observation of performance
- c) Questioning (written or oral)
- d) Personal statements and reflective logs
- e) Witness testimonies

This qualification is graded as pass/fail and you must evidence you have met all assessment criteria in the units you are registered to in order to meet the rules of combination.

What are the progression opportunities?

The primary purpose of this qualification is to support learners to progress in their occupational role and prepare for GPhC registration as a qualified pharmacy technician.



Datganiad Diben

Diploma Lefel 3 Open Awards mewn Egwyddorion ac Ymarfer ar gyfer Technegwyr Fferyllol (RQF)

Prif ddiben y cymhwyster hwn yw eich paratoi ar gyfer rôl alwedigaethol Technegydd Fferyllol. Mae wedi'i lunio i fodloni gofynion cofrestru'r Cyngor Fferyllol Cyffredinol (GPhC) a'r Safonau Galwedigaethol Cenedlaethol (NOS) perthnasol. Mae'r cymhwyster hwn wedi'i lunio i gadarnhau cymhwysedd galwedigaethol Technegwyr Fferyllol sy'n gweithio mewn amrywiaeth o leoliadau fferyllol, gan gynnwys: fferyllfeydd cofrestredig; practisau meddygon teulu; cartrefi gofal; grwpiau comisiynu clinigol ac ysbytai.

Ar gyfer pwy mae'r cymhwyster?

Dysgwyr sydd yn gweithio fel technegydd fferyllol cyn-gofrestru addas sydd eisiau gwneud cynnydd o fewn eu rôl a datblygu'r sgiliau/gwybodaeth/yymddygiad angenrheidiol i gofrestru gyda GPhC fel technegydd fferyllol cymwys.

Dysgwyr sy'n astudio prentisiaeth integredig Lefel 3 Technegydd Fferyllol.

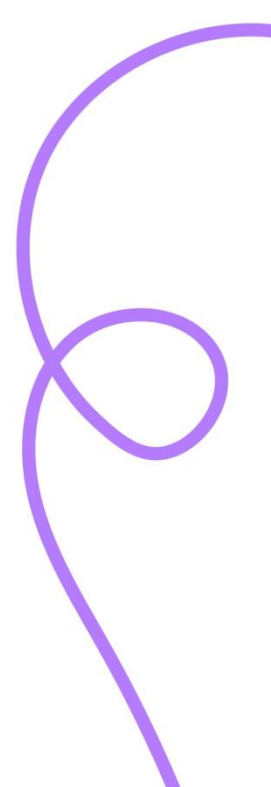
Beth mae'r cymhwyster hwn yn ei gynnwys?

Mae'r cymhwyster hwn yn cynnwys y wybodaeth, y sgiliau a'r ymddygiad o fewn Safonau Addysg a Hyfforddiant y GPhC ar gyfer technegwyr fferyllol. Mae 21 uned orfodol sy'n ymdrin â'r wybodaeth a'r ymddygiadau sylfaenol sydd eu hangen i gyflawni rôl technegydd fferyllol yn effeithiol gan gynnwys:

- Camau gweithredu a defnydd o feddyginiaethau
- Egwyddorion biolegol a chemegol ar gyfer technegwyr fferyllol
- Datblygiad personol ar gyfer technegwyr fferyllol
- Egwyddorion ar gyfer rheoli stoc fferyllol
- Egwyddorion iechyd a diogelwch ar gyfer technegwyr fferyllol
- Egwyddorion hybu iechyd a lles mewn gwasanaethau fferyllol
- Egwyddorion dulliau sy'n canolbwyntio ar yr unigolyn ar gyfer technegwyr fferyllol

Pwy sy'n cefnogi'r cymhwyster hwn?

Datblygwyd y cymhwyster hwn mewn cydweithrediad ag arbenigwyr pwnc a chyflogwyr, ynghyd â chyrrff dyfarnu eraill. Cefnogwyd y cymhwyster gan Sgiliau Iechyd ac Addysg Iechyd Lloegr. Mae'r cymhwyster hwn wedi'i gymeradwyo gan y Cyngor Fferyllol Cyffredinol.



Beth yw'r gofynion mynediad?

Mae'r cymhwyster hwn yn addas ar gyfer dysgwyr 16+ oed Oherwydd lefel a chynnwys y cymhwyster, mae'n ofynnol bod gennych TGAU Saesneg Gradd C (neu gyfwerth) a TGAU Mathemateg Gradd C (neu gyfwerth) fel isafswm.

Argymhellir hefyd bod gennych gymhwyster Gwyddoniaeth Lefel 2 (e.e. TGAU Gwyddoniaeth Gradd C); neu gymhwyster galwedigaethol Lefel 2 ar lefel 2 neu uwch (yn ddelfrydol yn gysylltiedig â fferylliaeth).

Mae gofynion mynediad gorfodol ychwanegol yn cynnwys:

- Gwiriadau cymeriad da e.e. y Gwasanaeth Datgelu a Gwahardd
- Gwiriadau iechyd i geisio gwybodaeth am gyflyrau a allai effeithio ar addasrwydd ymgeisydd i ymarfer fel hyfforddai a sut y bydd unrhyw gyflyrau o'r fath yn cael eu rheoli.

Mae'n rhaid eich bod yn cael eich cyflogi (naill ai'n llawn amser neu'n rhan-amser) mewn lleoliad fferyllfa addas er mwyn sicrhau bod gennych y cyfle i ddatblygu cymwyseddau a chwblhau tasgau fel yr amlinellir yn yr unedau yn y cymhwyster hwn.

Beth yw'r gofynion mynediad?

Bydd gofyn i chi gwblhau portffolio o dystiolaeth a osodir ac a farcir gan y darparwr addysg a sicrheir ansawdd yn allanol gan Open Awards.

Mae'n rhaid i chi ddarparu digon o dystiolaeth bod gennych y wybodaeth, y sgiliau a'r ddealltwriaeth ofynnol o'r meini prawf asesu ac mai eich gwaith eich hun ydyw.

Mathau o dystiolaeth y gellid eucynnwys:

- a) Aseiniadau ysgrifenedig neu arholiadau
- b) Arsylwi ar berfformiad
- c) Cwestiynu (ysgrifenedig neu ar lafar)
- d) Datganiadau personol a chofnodion myfyriol
- e) Tystiolaeth gan dystion

Mae'r cymhwyster hwn wedi'i raddio fel llwyddo/methu ac mae'n rhaid i chi ddangos tystiolaeth eich bod wedi bodloni'r holl feini prawf asesu yn yr unedau rydych wedi eich cofrestru ar eu cyfer er mwyn bodloni'r rheolau cyfuno.

Beth yw'r cyfleoedd dilyniant?

Prif ddiben y cymhwyster hwn yw cefnogi dysgwyr i wneud cynnydd yn eu rôl alwedigaethol a pharatoi ar gyfer cofrestru gyda GPhC fel technegydd fferyllol cymwysedig.

