

Purpose Statement

Open Awards Level 3 Technical Occupational Entry in the Principles and Practice for Technicians (Diploma)

The primary purpose of this qualification is to prepare you for the occupational role of Pharmacy Technician. It has been designed to meet the registration requirements of the General Pharmaceutical Council (GPhC) and the relevant National Occupational Standards (NOS). This qualification has been designed to confirm occupational competence for Pharmacy Technicians working in a range of pharmacy settings, including: registered pharmacies; GP practices; care homes; CCGs and hospitals. It is mapped to the apprenticeship Standard (STO300) Level 3 Pharmacy Technician to ensure comparability between the two routes to qualification.

Who is it for?

Learners who are in a suitable pre-registration pharmacy technician role who want to progress within their role and develop the skills/knowledge/behaviours required to register with GPhC as a qualification pharmacy technician.

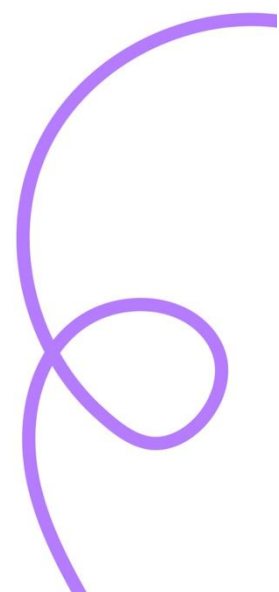
What does this qualification cover?

This qualification covers the knowledge, skills and behaviour within the GPhC Education and Training Standards for pharmacy technicians. There are 21 mandatory units that cover the underpinning knowledge and behaviours required to undertake a pharmacy technician role effectively including:

- Actions and uses of medicine
- Biological and chemical principles for pharmacy technicians
- Personal development for pharmacy technicians
- Principles for the management of pharmaceutical stock
- Principles of health and safety for pharmacy technicians
- Principles of health promotion and wellbeing in pharmacy services
- Principles of person-centred approaches for pharmacy technicians

Who supports this qualification?

This qualification was developed in collaboration with subject experts and employers, alongside other awarding bodies. It's original development was supported by Skills for Health and NHS England. This qualification has been approved by the General Pharmaceutical Council.



What are the entry requirements?

This qualification is suitable for learners aged 16+. Due to the level and content of the qualification, you are required to have GCSE English at Grade 4 / C (or equivalent) and GCSE Maths at Grade 4 / C (or equivalent) as a minimum.

It would also be recommended that you have a Level 2 Science qualification (e.g. GCSE Science at Grade 4 / C); or a Level 2 vocational qualification at level 2 or above (preferably related to pharmacy).

Additional mandatory entry requirements include:

- Good character checks e.g. Disclosure and Barring Service
- Health checks to seek information about conditions that may affect an applicant's fitness to practise as a trainee and how any such conditions will be managed.

What are the assessment methods?

You will be required to complete a portfolio of evidence set and marked by the education provider and externally quality assured by Open Awards.

You must provide sufficient evidence that you have the required knowledge, skills and understanding of the assessment criteria and that it is your own work.

Types of evidence could include:

- a) Written assignments or examinations
- b) Observation of performance
- c) Questioning (written or oral)
- d) Personal statements and reflective logs
- e) Witness testimonies

This qualification is graded as pass/fail and you must evidence you have met all assessment criteria in the units you are registered to in order to meet the rules of combination.

What are the progression opportunities?

The primary purpose of this qualification is to support learners to progress in their occupational role and prepare for GPhC registration as a qualified pharmacy technician.