

Purpose Statement

Open Awards Level 2 Certificate in the Principles and Practices for Pharmacy Support Staff (RQF)

Open Awards Level 2 Certificate in the Principles and Practices for Pharmacy Support Staff (Apprenticeship Route) (RQF)

The primary purpose of this qualification is to prepare you for an occupational role within Pharmacy Support services. It has been designed to meet the requirements of the General Pharmaceutical Council (GPhC) and the relevant National Occupational Standards (NOS). This qualification has been designed to confirm occupational competence for pharmacy support staff working in a range of pharmacy settings, including: registered pharmacies; GP practices; care homes; CCGs and hospitals.

The apprenticeship route is mapped to the apprenticeship Standard (ST0299) Level 2 Pharmacy Services Assistant and has been designed to support your training in preparation for your end-point assessment.

Who is it for?

Learners who are in a suitable pharmacy support services role who want to progress within their role and formalise their training and learning.

Learners on a Level 2 Pharmacy Services Assistant apprenticeship.

What does this qualification cover?

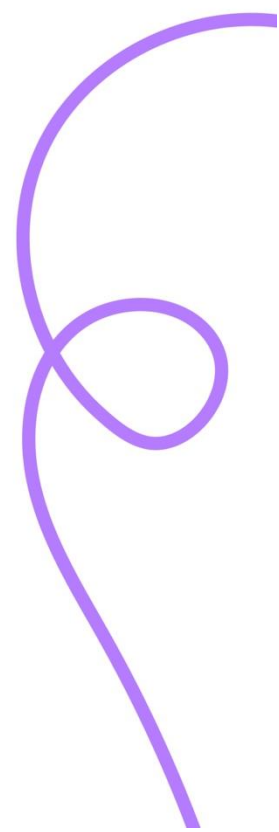
This qualification covers the knowledge, skills and behaviour within the GPhC Education and Training Standards for pharmacy support staff. There are four mandatory units that cover the underpinning knowledge and behaviours required to undertake a pharmacy support role effectively including:

- Teamwork and communication
- Person-centred care
- Health and safety
- Roles, responsibilities and personal development

You then have a choice of two out of four optional units that cover role-specific knowledge and skills:

- Dispensing and supply of medicines
- Stock management
- Over the counter sales
- Preparation and manufacturing of medicines and pharmaceutical products

Please note, if you are taking this qualification as part of an apprenticeship programme, you will be required to complete Dispensing and Supply of medicines and Stock Management units.



What are the entry requirements?

This qualification is suitable for learners aged 16+. There are no specific entry requirements with regards to prior qualifications.

Additional mandatory entry requirements include:

- Good character checks e.g. Disclosure and Barring Service
- Health checks to seek information about conditions that may affect an applicant's fitness to practise as a trainee and how any such conditions will be managed.

You must be employed (either full-time or part-time) in a suitable pharmacy setting to ensure you have the opportunity to develop competencies and complete tasks as outlined in the units within this qualification.

What are the assessment methods?

You will be required to complete a portfolio of evidence set and marked by the education provider and externally quality assured by Open Awards.

You must provide sufficient evidence that you have the required knowledge, skills and understanding of the assessment criteria and that it is your own work.

Types of evidence could include:

- a) Written assignments or examinations
- b) Observation of performance
- c) Questioning (written or oral)
- d) Personal statements and reflective logs
- e) Witness testimonies

This qualification is graded as pass/fail and you must evidence you have met all assessment criteria in the units you are registered to in order to meet the rules of combination.

What are the progression opportunities?

The primary purpose of this qualification is to support learners to progress in their occupational role within pharmacy support services. For those looking to continue their studies at a higher level, progression could include:

- Open Awards Level 3 Diploma in the Principles and Practices for Pharmacy Technicians (RQF)

What are the progression opportunities?

This qualification was developed in collaboration with subject experts and employers. It was supported by a range of training providers including Walsall College and Inspire Middlesex College. This qualification has been approved by the General Pharmaceutical Council.

